

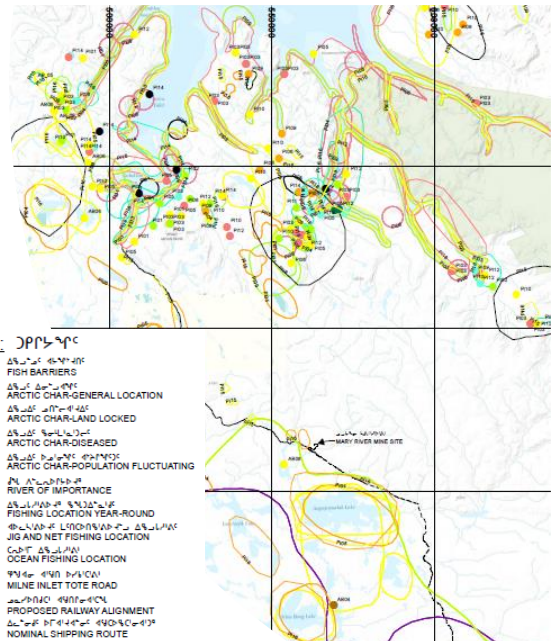
Public Consultation and Inuit Qaujimajatuqangit

ᐱᓄᓂᓄᓂ
ᐃᓄᓂᓄᓂ
ᓂᐱᓄᓂᓄᓂ
ᓂᐱᓄᓂᓄᓂ

Summary of Inuit Qaujimajatuqangit

ᓄᓂᓄᓂᓄᓂ ᓂᐱᓄᓂᓄᓂ
ᓂᐱᓄᓂᓄᓂ ᓂᐱᓄᓂᓄᓂ

- Original Inuit Qaujimajatuqangit study ᓄᓂᓄᓂᓄᓂ ᓂᐱᓄᓂᓄᓂ ᓂᐱᓄᓂᓄᓂ ᓂᐱᓄᓂᓄᓂ ᓂᐱᓄᓂᓄᓂ
- Lakes near the Project contain landlocked Arctic char ᐃᓄᓂᓄᓂ ᓂᐱᓄᓂᓄᓂ ᓂᐱᓄᓂᓄᓂ ᓂᐱᓄᓂᓄᓂ ᓂᐱᓄᓂᓄᓂ
- Most fishing occurs in waterbodies supporting sea run Arctic char / ᓂᐱᓄᓂᓄᓂ ᓂᐱᓄᓂᓄᓂ ᓂᐱᓄᓂᓄᓂ ᓂᐱᓄᓂᓄᓂ ᓂᐱᓄᓂᓄᓂ ᓂᐱᓄᓂᓄᓂ ᓂᐱᓄᓂᓄᓂ

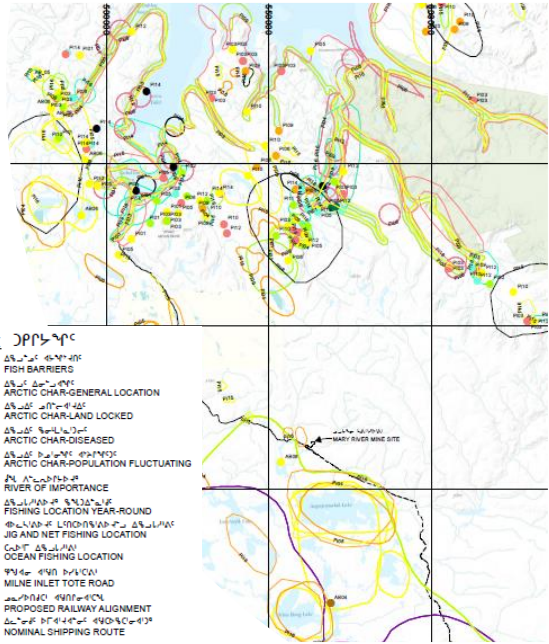




Summary of Inuit Qaujimajatuqangit

ደልዕ ናይሃሊሙር ደዕል ናይሃሊኒኑናኔር ደኔሊረ

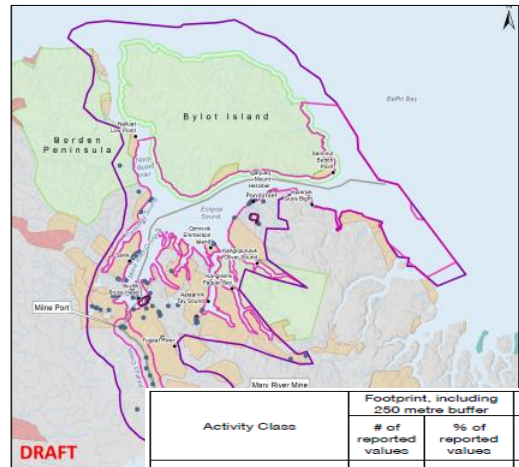
- Nunavut Wildlife Harvest Study (1996 - 2001)
ደዕል ሙሉ ሙሉ
ላካዕብር ደኔሊረ (1996-ፎ 2001-ፊ)
- All fishing occurred in the coastal waterbodies that support sea run Arctic char
ደኔሊረ ናይሃሊኒኑናኔር ደኔሊረ ለካዕብር
ደኔሊረ ደኔሊረ ለካዕብር ለካዕብር
ደኔሊረ ናይሃሊኒኑናኔር



Summary of Inuit Qaujimajatuqangit Tusaqtavut Study

ደልዕ ናይሃሊሙር ደዕል ናይሃሊኒኑናኔር ደኔሊረ ደኔሊረ

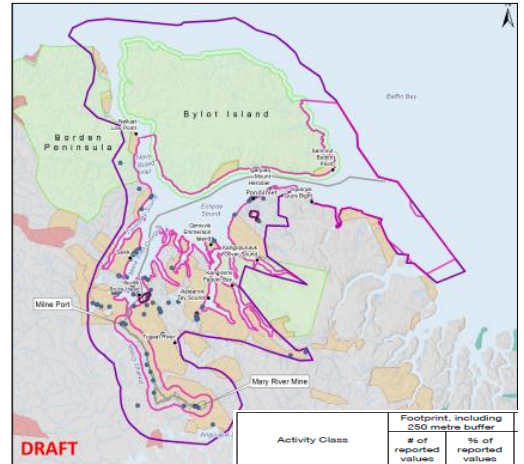
- Pond Inlet Tusaqtavut Study ፎንፊር ደኔሊረ ደኔሊረ ደኔሊረ
- 14 Subsistence values within 250 m of Project footprint
14 ለካዕብር ደኔሊረ ደኔሊረ 250 ፎንፊር ደኔሊረ ደኔሊረ
- Fishing sites ደኔሊረ ደኔሊረ
- Drinking water sources ደኔሊረ ደኔሊረ



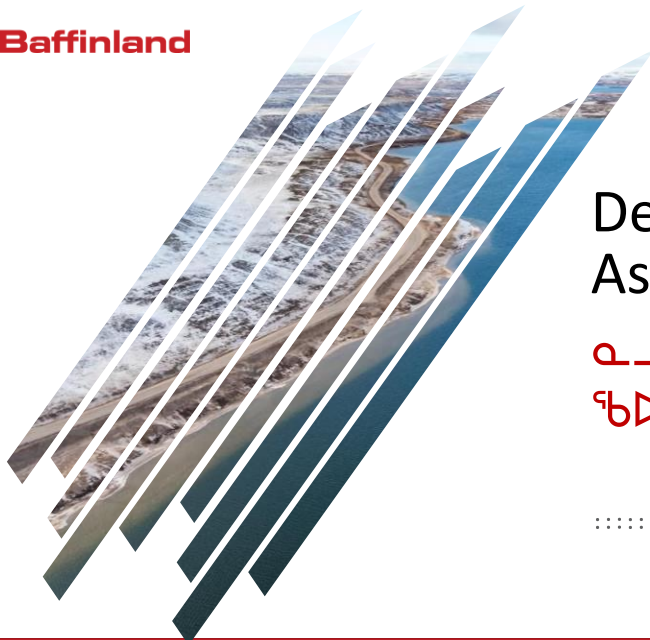
Summary of Inuit Qaujimagatuqangit Tusaqtavut Study

ዲግሪ ማህበረሰብ ልዩ ልዩ ስርዓት ለማድረግ የሚያስፈልጉትን ግንኙነት ለመግለጽ ለሚያስፈልጉት ስርዓት ለማድረግ

- Hall Beach and Igloolik Tusaqtavut Study ካሳታታታ ልዩ ልዩ ስርዓት ለማድረግ ለሚያስፈልጉት ስርዓት ለማድረግ
- Identified fishing waterbodies around Steensby Inlet that support mainly sea run Arctic char ዲግሪ ማህበረሰብ ልዩ ልዩ ስርዓት ለማድረግ የሚያስፈልጉትን ግንኙነት ለመግለጽ ለሚያስፈልጉት ስርዓት ለማድረግ



Activity Class	Footprint, including 250 metre buffer # of reported values	% of reported values
Cultural	0	0%
Environmental	2	8.3%
Subsistence	14	58.3%
Impacted	8	33.3%
Total	24	100%



Description of Assessment

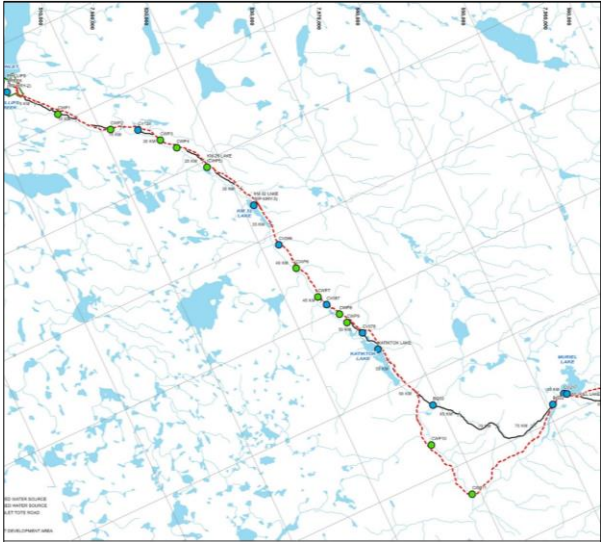
ዲግሪ ማህበረሰብ ልዩ ልዩ ስርዓት ለማድረግ የሚያስፈልጉትን ግንኙነት ለመግለጽ ለሚያስፈልጉት ስርዓት ለማድረግ

.....

Phase 2 Interactions with Freshwater Quantity

ᐅᓕᓕᓕᓕᓕᓕᓕ ᓕᓕᓕᓕᓕᓕᓕᓕᓕ ᐅᓕᓕᓕᓕᓕᓕᓕ ᐅᓕᓕᓕᓕᓕᓕᓕ

- 13 additional water sources for dust suppression
13 ᐅᓕᓕᓕᓕᓕᓕ ᐅᓕᓕᓕᓕᓕᓕᓕ ᓕᓕᓕ
>ᓕᓕᓕᓕᓕᓕᓕᓕᓕᓕᓕᓕᓕᓕᓕᓕ
- 10 stream diversions along North Railway
10 ᓕᓕᓕᓕ ᓕᓕᓕᓕᓕᓕᓕᓕᓕᓕᓕ ᐅᓕᓕᓕᓕ
ᓕᓕᓕᓕᓕᓕᓕᓕ ᐅᓕᓕᓕᓕᓕᓕᓕᓕ
ᓕᓕᓕᓕᓕᓕᓕᓕ



Phase 2 Interactions with Water Quality

ᐅᓕᓕᓕᓕᓕᓕᓕ ᓕᓕᓕᓕᓕᓕᓕᓕᓕ ᐅᓕᓕᓕᓕᓕᓕᓕ ᐅᓕᓕᓕᓕᓕᓕᓕᓕᓕ

- Mine Plan and Waste Rock Disposal
ᓕᓕᓕᓕᓕᓕᓕᓕᓕ ᓕᓕᓕᓕᓕ ᐅᓕᓕᓕᓕ
ᓕᓕᓕᓕᓕᓕᓕᓕᓕᓕᓕ ᓕᓕᓕᓕ ᐅᓕᓕᓕᓕᓕᓕ
- Mine plan unchanged
ᓕᓕᓕᓕᓕᓕᓕᓕᓕ ᓕᓕᓕᓕᓕᓕᓕ ᐅᓕᓕᓕᓕᓕᓕᓕᓕ
- Quarries and rock cuts
ᓕᓕᓕᓕᓕᓕᓕᓕ ᐅᓕᓕᓕ ᓕᓕᓕᓕᓕᓕᓕᓕᓕ
- Testing shows risk of acid rock drainage and metal leaching is negligible to low
ᓕᓕᓕᓕᓕᓕᓕᓕ ᓕᓕᓕᓕᓕ ᓕᓕᓕᓕᓕᓕᓕᓕᓕᓕᓕᓕᓕᓕᓕᓕᓕᓕᓕ
ᓕᓕᓕᓕᓕᓕᓕ ᓕᓕᓕᓕᓕᓕ ᓕᓕᓕᓕᓕᓕᓕᓕᓕᓕ ᐅᓕᓕᓕᓕ
ᓕᓕᓕᓕᓕᓕᓕ ᓕᓕᓕᓕᓕᓕᓕᓕ ᓕᓕᓕᓕᓕᓕᓕᓕᓕᓕᓕᓕᓕᓕᓕᓕ
ᐅᓕᓕ ᓕᓕᓕᓕᓕᓕᓕᓕᓕᓕᓕ



Waste Rock Facility – Summer 2019 / ᐅᓕᓕᓕᓕᓕᓕ ᓕᓕᓕᓕᓕᓕᓕᓕ 2019

Project Mitigation – Water Quantity and Quality

**ᐱᑦᑕᑦᑲᑦᑦᑦ ᐱᑦᑕᑦᑲᑦᑦᑦ ᐱᑦᑕᑦᑲᑦᑦᑦ ᐱᑦᑕᑦᑲᑦᑦᑦ –
ᐱᑦᑕᑦᑲᑦᑦᑦ ᐱᑦᑕᑦᑲᑦᑦᑦ ᐱᑦᑕᑦᑲᑦᑦᑦ ᐱᑦᑕᑦᑲᑦᑦᑦ**

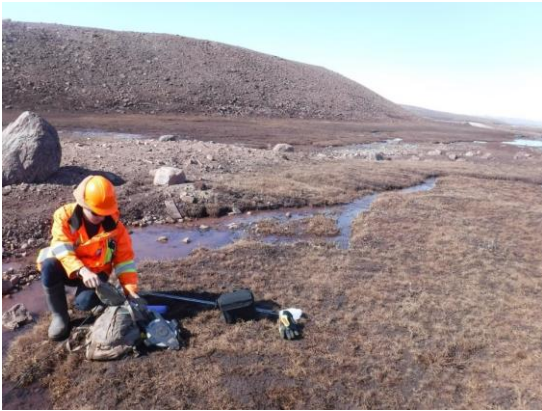
- Mitigation through design
ᐱᑦᑕᑦᑲᑦᑦᑦ ᐱᑦᑕᑦᑲᑦᑦᑦ ᐱᑦᑕᑦᑲᑦᑦᑦ ᐱᑦᑕᑦᑲᑦᑦᑦ
- Limiting project footprint
ᑦᑦᑦᑦᑦᑦᑦᑦ ᐱᑦᑕᑦᑲᑦᑦᑦ ᐱᑦᑕᑦᑲᑦᑦᑦ
- Use existing infrastructure
ᐱᑦᑕᑦᑲᑦᑦᑦ ᐱᑦᑕᑦᑲᑦᑦᑦ ᐱᑦᑕᑦᑲᑦᑦᑦ
- Limiting stream diversions required
ᑦᑦᑦᑦ ᐱᑦᑕᑦᑲᑦᑦᑦ ᐱᑦᑕᑦᑲᑦᑦᑦ ᐱᑦᑕᑦᑲᑦᑦᑦ
- Plate Arch Culverts to maintain fish passage
ᐱᑦᑕᑦᑲᑦᑦᑦ ᐱᑦᑕᑦᑲᑦᑦᑦ ᐱᑦᑕᑦᑲᑦᑦᑦ ᐱᑦᑕᑦᑲᑦᑦᑦ
- Realignment to avoid fish habitat
ᐱᑦᑕᑦᑲᑦᑦᑦ ᐱᑦᑕᑦᑲᑦᑦᑦ ᐱᑦᑕᑦᑲᑦᑦᑦ ᐱᑦᑕᑦᑲᑦᑦᑦ



Project Mitigation – Water Quantity and Quality

**ᐱᑦᑕᑦᑲᑦᑦᑦ ᐱᑦᑕᑦᑲᑦᑦᑦ ᐱᑦᑕᑦᑲᑦᑦᑦ ᐱᑦᑕᑦᑲᑦᑦᑦ –
ᐱᑦᑕᑦᑲᑦᑦᑦ ᐱᑦᑕᑦᑲᑦᑦᑦ ᐱᑦᑕᑦᑲᑦᑦᑦ ᐱᑦᑕᑦᑲᑦᑦᑦ**

- Regulatory requirements
- Type A water license
ᑦᑦᑦᑦᑦᑦ ᐱ ᐱᑦᑕᑦᑲᑦᑦ ᑕᐱᑦᑦ
 - Fisheries Authorizations
ᐱᑦᑕᑦᑲᑦᑦᑦ ᐱᑦᑕᑦᑲᑦᑦᑦ ᐱᑦᑕᑦᑲᑦᑦᑦ
 - DFO Guidance
ᐱᑦᑕᑦᑲᑦᑦᑦ ᐱᑦᑕᑦᑲᑦᑦᑦ ᐱᑦᑕᑦᑲᑦᑦᑦ
 - MDMER (Mine Site and Milne Port)
MDMER (ᐱᑦᑕᑦᑲᑦᑦᑦ ᐱᑦᑕᑦᑲᑦᑦᑦ ᐱᑦᑕᑦᑲᑦᑦᑦ)



Project Mitigation

ᐱᑦᐱᑦᐱᑦ ᐱᑦᐱᑦᐱᑦ ᐱᑦᐱᑦᐱᑦ ᐱᑦᐱᑦᐱᑦ

Management Plans implemented and updated

ᐱᑦᐱᑦᐱᑦ ᐱᑦᐱᑦᐱᑦ ᐱᑦᐱᑦᐱᑦ ᐱᑦᐱᑦᐱᑦ ᐱᑦᐱᑦᐱᑦ ᐱᑦᐱᑦᐱᑦ

- Dust Mitigation Action Plan
ᐱᑦᐱᑦᐱᑦ ᐱᑦᐱᑦᐱᑦ ᐱᑦᐱᑦᐱᑦ ᐱᑦᐱᑦᐱᑦ
- Sedimentation Mitigation Action Plan
ᐱᑦᐱᑦᐱᑦ ᐱᑦᐱᑦᐱᑦ ᐱᑦᐱᑦᐱᑦ ᐱᑦᐱᑦᐱᑦ
- Tote Road Earthworks Execution Plan
ᐱᑦᐱᑦᐱᑦ ᐱᑦᐱᑦᐱᑦ ᐱᑦᐱᑦᐱᑦ ᐱᑦᐱᑦᐱᑦ
- Snow Management Plan
ᐱᑦᐱᑦᐱᑦ ᐱᑦᐱᑦᐱᑦ ᐱᑦᐱᑦᐱᑦ ᐱᑦᐱᑦᐱᑦ
- Surface Water and Aquatic Ecosystems Management Plan
ᐱᑦᐱᑦᐱᑦ ᐱᑦᐱᑦᐱᑦ ᐱᑦᐱᑦᐱᑦ ᐱᑦᐱᑦᐱᑦ
- Fresh Water Supply, Sewage and Wastewater Management Plan
ᐱᑦᐱᑦᐱᑦ ᐱᑦᐱᑦᐱᑦ ᐱᑦᐱᑦᐱᑦ ᐱᑦᐱᑦᐱᑦ
- Borrow Pit and Quarry Management Plan
ᐱᑦᐱᑦᐱᑦ ᐱᑦᐱᑦᐱᑦ ᐱᑦᐱᑦᐱᑦ ᐱᑦᐱᑦᐱᑦ
- Phase 1 Waste Rock Management Plan
ᐱᑦᐱᑦᐱᑦ ᐱᑦᐱᑦᐱᑦ ᐱᑦᐱᑦᐱᑦ ᐱᑦᐱᑦᐱᑦ

Project Monitoring

ᐱᑦᐱᑦᐱᑦ ᐱᑦᐱᑦᐱᑦ ᐱᑦᐱᑦᐱᑦ

Established Monitoring Programs

ᐱᑦᐱᑦᐱᑦ ᐱᑦᐱᑦᐱᑦ ᐱᑦᐱᑦᐱᑦ ᐱᑦᐱᑦᐱᑦ

- Aquatic Effects Monitoring Program
ᐱᑦᐱᑦᐱᑦ ᐱᑦᐱᑦᐱᑦ ᐱᑦᐱᑦᐱᑦ ᐱᑦᐱᑦᐱᑦ
- Environmental Effects Monitoring Program
ᐱᑦᐱᑦᐱᑦ ᐱᑦᐱᑦᐱᑦ ᐱᑦᐱᑦᐱᑦ ᐱᑦᐱᑦᐱᑦ
- Surveillance Network Program
ᐱᑦᐱᑦᐱᑦ ᐱᑦᐱᑦᐱᑦ ᐱᑦᐱᑦᐱᑦ ᐱᑦᐱᑦᐱᑦ
- Lake Sedimentation
ᐱᑦᐱᑦᐱᑦ ᐱᑦᐱᑦᐱᑦ ᐱᑦᐱᑦᐱᑦ ᐱᑦᐱᑦᐱᑦ



Project Monitoring

ᐱᑦᑲᑦᑲᑦᑲᑦ ᑲᑦᑲᑦᑲᑦᑲᑦ ᑲᑦᑲᑦᑲᑦ

Established Monitoring Programs

ᑲᑦᑲᑦᑲᑦᑲᑦ ᑲᑦᑲᑦᑲᑦᑲᑦ ᑲᑦᑲᑦᑲᑦᑲᑦ ᐱᑦᑲᑦᑲᑦ

- Hydrology
ᑲᑦᑲᑦᑲᑦ ᐱᑦᑲᑦᑲᑦ
- Fisheries Authorization monitoring
ᐱᑦᑲᑦᑲᑦᑲᑦ ᐱᑦᑲᑦᑲᑦᑲᑦ ᐱᑦᑲᑦᑲᑦᑲᑦ ᑲᑦᑲᑦᑲᑦᑲᑦ
- Tote Road Monitoring Program
ᐱᑦᑲᑦᑲᑦᑲᑦ ᑲᑦᑲᑦᑲᑦᑲᑦ ᐱᑦᑲᑦᑲᑦ
- Water crossing installation/modification guideline
ᐱᑦᑲᑦᑲᑦ ᐱᑦᑲᑦᑲᑦ
ᐱᑦᑲᑦᑲᑦᑲᑦᑲᑦ/ᐱᑦᑲᑦᑲᑦᑲᑦᑲᑦ
ᐱᑦᑲᑦᑲᑦᑲᑦᑲᑦᑲᑦᑲᑦᑲᑦ



Project Monitoring

ᐱᑦᑲᑦᑲᑦᑲᑦ ᑲᑦᑲᑦᑲᑦᑲᑦ ᑲᑦᑲᑦᑲᑦ

New or Expanded Monitoring Programs

ᑲᑦᑲᑦᑲᑦ ᐱᑦᑲᑦᑲᑦᑲᑦ ᐱᑦᑲᑦᑲᑦᑲᑦᑲᑦ ᑲᑦᑲᑦᑲᑦᑲᑦ ᐱᑦᑲᑦᑲᑦ

- Detailed water withdrawal plan
ᑲᑦᑲᑦᑲᑦᑲᑦᑲᑦ ᐱᑦᑲᑦᑲᑦ ᐱᑦᑲᑦᑲᑦᑲᑦ ᐱᑦᑲᑦᑲᑦ
- Tote Road Monitoring Program to incorporate North Railway
ᐱᑦᑲᑦᑲᑦᑲᑦ ᑲᑦᑲᑦᑲᑦᑲᑦ ᐱᑦᑲᑦᑲᑦᑲᑦ ᐱᑦᑲᑦᑲᑦ
ᐱᑦᑲᑦᑲᑦᑲᑦᑲᑦ ᐱᑦᑲᑦᑲᑦᑲᑦ ᐱᑦᑲᑦᑲᑦᑲᑦᑲᑦ
- Fish passage monitoring to incorporate North Railway
ᐱᑦᑲᑦᑲᑦ ᐱᑦᑲᑦᑲᑦᑲᑦ ᑲᑦᑲᑦᑲᑦᑲᑦ ᐱᑦᑲᑦᑲᑦᑲᑦ ᐱᑦᑲᑦᑲᑦ
ᐱᑦᑲᑦᑲᑦᑲᑦᑲᑦ ᐱᑦᑲᑦᑲᑦᑲᑦ ᐱᑦᑲᑦᑲᑦᑲᑦᑲᑦ
- Stream diversion monitoring
ᐱᑦᑲᑦᑲᑦ ᑲᑦᑲᑦᑲᑦᑲᑦᑲᑦ ᑲᑦᑲᑦᑲᑦᑲᑦᑲᑦ
- Inuit Monitoring
ᐱᑦᑲᑦᑲᑦ ᑲᑦᑲᑦᑲᑦᑲᑦᑲᑦᑲᑦ



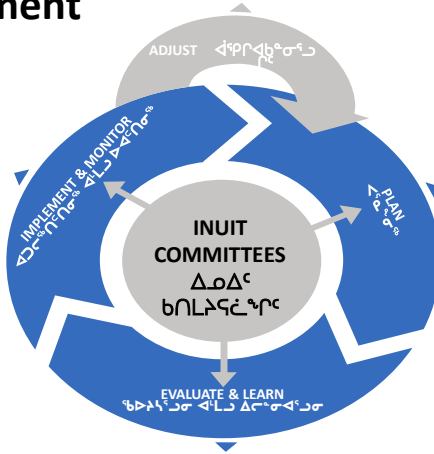
Adaptive Management

4. Implement Predetermined Responses as Necessary 4.

ᐊᑲᑲᑦᐸᑦᑲᑦᑲᑦ ᑭᓂᑦᑲᑦ ᐃᑲᑲᑦᑲᑦᑲᑦ ᑲᑲᑲᑦᑲᑦᑲᑦ ᐃᑲᑲᑦᑲᑦᑲᑦ ᐃᑲᑲᑦᑲᑦᑲᑦ

3. QIA Implements Inuit Stewardship Plan Monitoring Programs

3. ᑭᓂᑦᑲᑦ ᐃᑲᑲᑦ ᑲᑲᑲᑦᑲᑦᑲᑦ ᐊᑲᑲᑦᑲᑦᑲᑦ ᐃᑲᑲᑦ ᐃᑲᑲᑦᑲᑦᑲᑦ ᐃᑲᑲᑦᑲᑦᑲᑦ ᐃᑲᑲᑦᑲᑦᑲᑦ



1. Baffinland and QIA Agree to Adaptive Management Plan; QIA Establishes Inuit Stewardship Plan

1. ᐃᑲᑲᑦᑲᑦᑲᑦ ᐃᑲᑲᑦ ᑭᓂᑦᑲᑦ ᐃᑲᑲᑦ ᑲᑲᑲᑦᑲᑦᑲᑦ ᐊᑲᑲᑦᑲᑦᑲᑦ ᐃᑲᑲᑦᑲᑦᑲᑦ ᐃᑲᑲᑦᑲᑦᑲᑦ ᐃᑲᑲᑦᑲᑦᑲᑦ ᐃᑲᑲᑦᑲᑦᑲᑦ ᐃᑲᑲᑦᑲᑦᑲᑦ

2. Review of Monitoring Program Results Against Predetermined Indicators and Thresholds

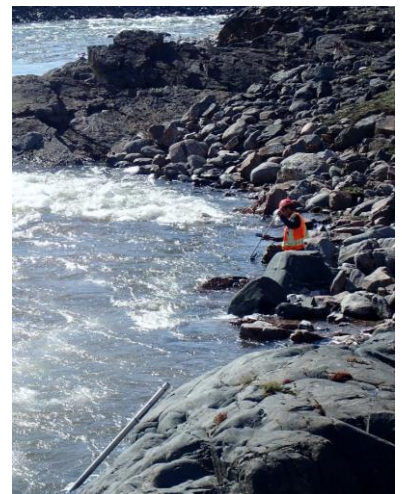
2. ᑭᓂᑦᑲᑦᑲᑦ ᐃᑲᑲᑦ ᐃᑲᑲᑦᑲᑦᑲᑦ ᐃᑲᑲᑦᑲᑦᑲᑦ ᐃᑲᑲᑦᑲᑦᑲᑦ ᐃᑲᑲᑦᑲᑦᑲᑦ ᐃᑲᑲᑦᑲᑦᑲᑦ ᐃᑲᑲᑦᑲᑦᑲᑦ ᐃᑲᑲᑦᑲᑦᑲᑦ



Incorporating Lessons Learned

ᐃᑲᑲᑦᑲᑦᑲᑦ ᐃᑲᑲᑦᑲᑦᑲᑦ ᐃᑲᑲᑦᑲᑦᑲᑦ

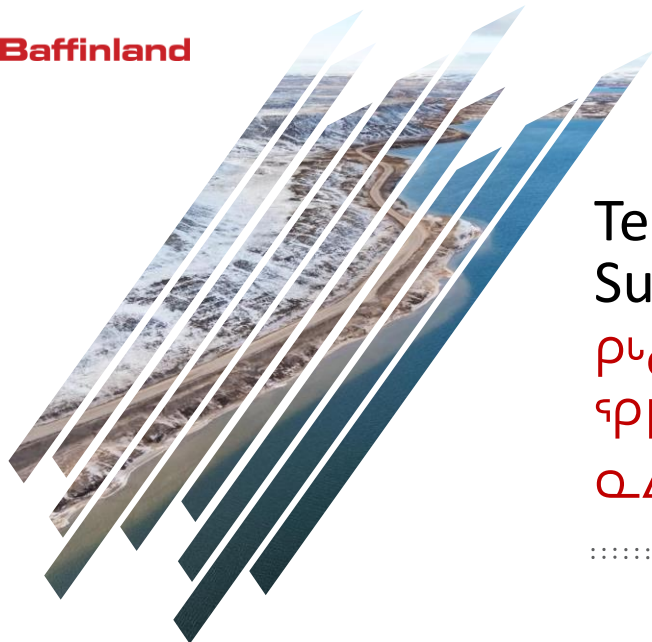
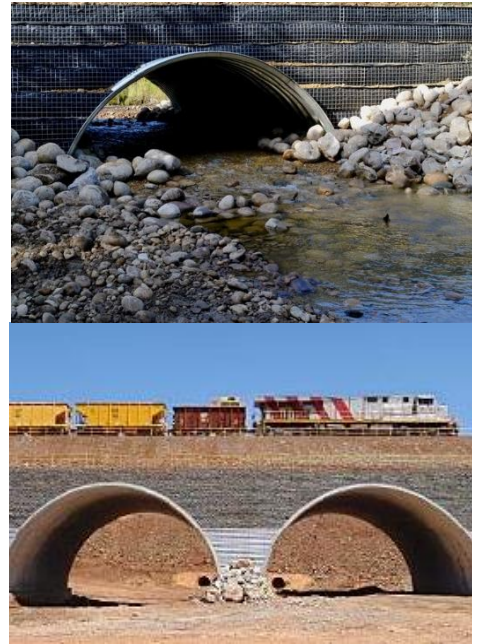
- Inuit and scientific monitoring will keep enhancing data set
ᐃᑲᑲᑦᑲᑦᑲᑦ ᐃᑲᑲᑦᑲᑦᑲᑦ ᐃᑲᑲᑦᑲᑦᑲᑦ ᐃᑲᑲᑦᑲᑦᑲᑦ ᐃᑲᑲᑦᑲᑦᑲᑦ ᐃᑲᑲᑦᑲᑦᑲᑦ
- Inuit committees and CRLU monitoring/assessment will incorporate Inuit Quaujimajatuqangit into freshwater monitoring programs, compensation and adaptive management
ᐃᑲᑲᑦᑲᑦᑲᑦ ᐃᑲᑲᑦᑲᑦᑲᑦ ᐃᑲᑲᑦᑲᑦᑲᑦ ᐃᑲᑲᑦᑲᑦᑲᑦ ᐃᑲᑲᑦᑲᑦᑲᑦ ᐃᑲᑲᑦᑲᑦᑲᑦ ᐃᑲᑲᑦᑲᑦᑲᑦ ᐃᑲᑲᑦᑲᑦᑲᑦ ᐃᑲᑲᑦᑲᑦᑲᑦ



Incorporating Lessons Learned

ΔΔΔΔΔΔΔΔ ΔΔΔΔΔΔΔΔ ΔΔΔΔΔΔΔΔΔΔΔΔΔΔ

- Enhanced Baffinland and Inuit collaboration on Tote Road Monitoring Program and water crossing construction monitoring
 ΔΔΔΔΔΔΔΔ ΔΔΔΔ ΔΔΔΔ ΔΔΔ
 ΔΔΔΔΔΔΔΔ ΔΔΔΔΔΔΔΔ
 ΔΔΔΔΔΔΔ ΔΔΔΔΔΔΔ ΔΔΔΔΔΔΔ
 ΔΔΔΔΔ ΔΔΔΔΔ ΔΔΔΔΔ
 ΔΔΔΔΔΔΔ



Technical Review Summary

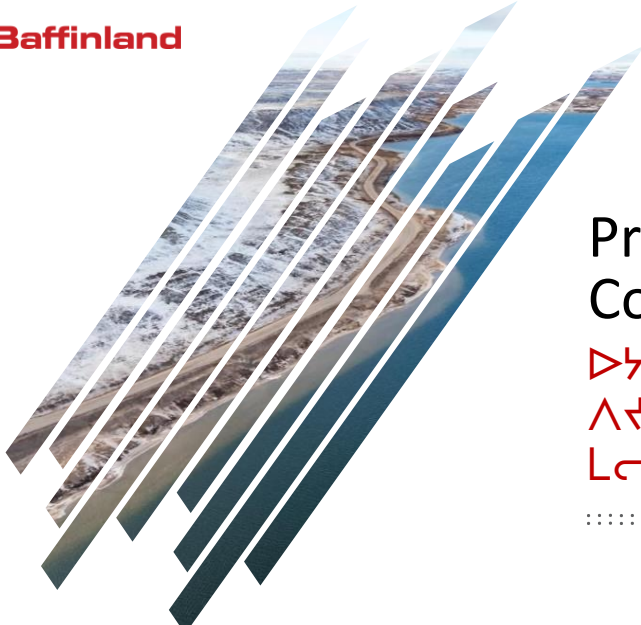
ΔΔΔΔΔΔΔΔ
 ΔΔΔΔΔΔΔΔ
 ΔΔΔ ΔΔΔ

.....

Freshwater Environment Key Commitments

ᐃᐤᐢᐱᐍᑦ ᐋᐍᐢᐱ ᐃᐤᐢᐱᐅᑦ ᐹᐋᑦᓂᐋᑦᓂᑦᑕᑦᑕᑦᑕᑦ

- Multiple commitments to provide detailed information in Post-EA Fisheries Authorizations Applications
ᐋᐢᑦᑕ ᐃᐤᐢᐱᐅᓂᐋᑦᓂᑦᑕᑦᑕᑦᑕᑦᑕᑦ
ᐹᑦᑕᐢᐱᐅᐢᑦᑕᑦᑕᑦᑕᑦᑕᑦᑕᑦ ᑦᑕᑦᑕᑦᑕᑦ EA
ᐋᑦᐃᐅᐃᑦᐅᑦᑕᑦᑕᑦᑕᑦ ᐃᐅᑦᑕᑦᑕᑦᑕᑦ
- Water Compensation Agreement to be re-negotiated with QIA
ᐋᐢᑦᑕ ᐋᑦᑕᑦᑕᑦᑕᑦᑕᑦᑕᑦᑕᑦᑕᑦᑕᑦᑕᑦᑕᑦᑕᑦᑕᑦ
ᐋᑦᑕᑦᑕᑦᑕᑦᑕᑦᑕᑦᑕᑦᑕᑦᑕᑦᑕᑦᑕᑦᑕᑦᑕᑦᑕᑦ
ᐃᐅᑦᑕᑦᑕᑦᑕᑦᑕᑦᑕᑦᑕᑦᑕᑦᑕᑦᑕᑦᑕᑦᑕᑦᑕᑦᑕᑦ
- Updated hydrological assessments
ᐅᑦᑕᑦᑕᑦᑕᑦᑕᑦᑕᑦᑕᑦᑕᑦᑕᑦᑕᑦᑕᑦᑕᑦᑕᑦᑕᑦᑕᑦ
- Inclusion of crossing decision matrix
ᐋᑦᑕᑦᑕᑦᑕᑦᑕᑦᑕᑦᑕᑦᑕᑦᑕᑦᑕᑦᑕᑦᑕᑦᑕᑦᑕᑦᑕᑦ
- Detailed water withdrawal plans
ᐅᑦᑕᑦᑕᑦᑕᑦᑕᑦᑕᑦᑕᑦᑕᑦᑕᑦᑕᑦᑕᑦᑕᑦᑕᑦᑕᑦᑕᑦ



Project Certificate Conditions

ᐅᑦᑕᑦᑕᑦᑕᑦᑕᑦᑕᑦᑕᑦᑕᑦᑕᑦᑕᑦᑕᑦᑕᑦᑕᑦᑕᑦᑕᑦ
ᐃᐅᑦᑕᑦᑕᑦᑕᑦᑕᑦᑕᑦᑕᑦᑕᑦᑕᑦᑕᑦᑕᑦᑕᑦᑕᑦᑕᑦ
ᐤᑦᑕᑦᑕᑦᑕᑦ
.....

Project Certificate Conditions

ᐅᓴᓴᓐᓂᐸᓄᓐᓂᐸᓄᓐ ᐱᓴᓐᓂᐸᓄᓐᓂᐸᓄᓐ ᓴᓴᓴᓐᓂᐸᓄᓐ

- Recommend removal (duplicative of licence/authorization)
ᐃᓴᓴᓐᓂᐸᓄᓐ ᐱᓴᓐᓂᐸᓄᓐ (ᐸᓴᓴᓐᓂᐸᓄᓐ ᓴᓴᓴᓐᓂᐸᓄᓐ)
- 42 – 30 metre buffer between operations and water bodies
42 – 30 ᓴᓴᓴᓐ ᐱᓴᓐᓂᐸᓄᓐ ᐸᓴᓴᓐᓂᐸᓄᓐ ᐸᓴᓴᓐᓂᐸᓄᓐ ᐸᓴᓴᓐ
- 43 – Drainage and silt control plan
43 – ᐸᓴᓴᓐᓂᐸᓄᓐ ᐸᓴᓴᓐ ᐸᓴᓴᓐᓂᐸᓄᓐ ᓴᓴᓴᓐ ᐸᓴᓴᓐᓂᐸᓄᓐ
- 44 – Blasting thresholds and residues
44 – ᓴᓴᓴᓐᓂᐸᓄᓐ ᓴᓴᓴᓐᓂᐸᓄᓐ ᓴᓴᓴᓐᓂᐸᓄᓐ ᓴᓴᓴᓐ ᐸᓴᓴᓐ
- 45 – No-Net-Loss Principle
45 – ᓴᓴᓴᓐ ᓴᓴᓴᓐᓂᐸᓄᓐ



Project Certificate Conditions

ᐅᓴᓴᓐᓂᐸᓄᓐᓂᐸᓄᓐ ᐱᓴᓐᓂᐸᓄᓐᓂᐸᓄᓐ ᓴᓴᓴᓐᓂᐸᓄᓐ

- 46 – Ensure runoff meet discharge requirements
46 – ᐸᓴᓴᓐ ᐸᓴᓴᓐᓂᐸᓄᓐ ᐸᓴᓴᓐᓂᐸᓄᓐ ᐸᓴᓴᓐᓂᐸᓄᓐ
- 47 – Maintain movement of water in fish bearing streams and rivers
47 – ᐸᓴᓴᓐᓂᐸᓄᓐ ᐸᓴᓴᓐ ᐸᓴᓴᓐᓂᐸᓄᓐ ᐸᓴᓴᓐ ᐸᓴᓴᓐ
- 48 – Develop project specific blasting thresholds
48 – ᐸᓴᓴᓐᓂᐸᓄᓐ ᐸᓴᓴᓐ ᐸᓴᓴᓐᓂᐸᓄᓐ ᐸᓴᓴᓐ
- 48 (a) – Arctic char surveys and ongoing monitoring of Arctic char health
48 (a) – ᐸᓴᓴᓐᓂᐸᓄᓐ ᐸᓴᓴᓐ ᐸᓴᓴᓐᓂᐸᓄᓐ ᐸᓴᓴᓐ





Summary

ዲልቲ ንግረግግር

.....

Summary

ዲልቲ ንግረግግር

- Phase 2 does not propose any new interactions with freshwater
ጋኑርግር ንግረግግር ለግር ለግር ለግር ጋኑርግር ንግረግግር ጋኑርግር ለግር ለግር ለግር
- Effects are predictable and minor
ጋኑርግር ንግረግግር ጋኑርግር ንግረግግር ጋኑርግር ንግረግግር
- Expanded management and monitoring programs to be put in place
ጋኑርግር ንግረግግር ጋኑርግር ንግረግግር ጋኑርግር ንግረግግር

Thank you
ᖃᑦᑲᑦᑲᑦᑲᑦ

CORPORATE OFFICE

2275 Upper Middle Road East, Suite 300
Oakville, Ontario, Canada L6H 0C3
Tel: 1.416.364.8820

ᐱᖃᑦᑲᑦᑲᑦᑲᑦ ᐱᖃᑦᑲᑦᑲᑦ

2275 ᖃᑦᑲᑦᑲᑦᑲᑦ ᐱᖃᑦᑲᑦᑲᑦ ᐱᖃᑦᑲᑦᑲᑦᑲᑦ,
ᐱᖃᑦᑲᑦᑲᑦᑲᑦᑲᑦ 300
ᐱᖃᑦᑲᑦᑲᑦᑲᑦᑲᑦ, ᐱᖃᑦᑲᑦᑲᑦᑲᑦᑲᑦ L6H 0C3
ᐱᖃᑦᑲᑦᑲᑦᑲᑦᑲᑦ: 1.416.364.8820

NORTHERN HEAD OFFICE

Building 622, Iqaluit House, Suite 102
Iqaluit, NU X0A 0H0

ᐱᖃᑦᑲᑦᑲᑦᑲᑦ ᐱᖃᑦᑲᑦᑲᑦᑲᑦ ᐱᖃᑦᑲᑦᑲᑦ

ᐱᖃᑦᑲᑦᑲᑦᑲᑦᑲᑦ 622, ᐱᖃᑦᑲᑦᑲᑦᑲᑦᑲᑦ ᐱᖃᑦᑲᑦᑲᑦᑲᑦ,
ᐱᖃᑦᑲᑦᑲᑦᑲᑦᑲᑦᑲᑦ 102
ᐱᖃᑦᑲᑦᑲᑦᑲᑦᑲᑦᑲᑦ X0A 0H0

